

PORTFOLIO



Vidhi Anand

Romanticism- Mughal- e- Sultanate: A blend of rich cultural heritage of two strong empires

My inspirational topic for the former collection is highly inspired by two rich cultures moulded into one subculture. Enormously exciting periods such as, Romanticism from early 1800's and Indian Mogul empire from mid-1500's which embarked a revolutionary rise in the field of art, architecture, social and political reforms. Classic regency styles and radical shifts in the democratic revolutions best define these eras. Inspiring from the subculture my designs are carried forward with the help of concepts developed for Roman-ate Culture. Such as:

- Sovereignty in disguise
- Emperors in league, virility in the social dynamics
- Revolutionary styles, the impact of art oppose to artillery
- Social influence on women's attitude and style

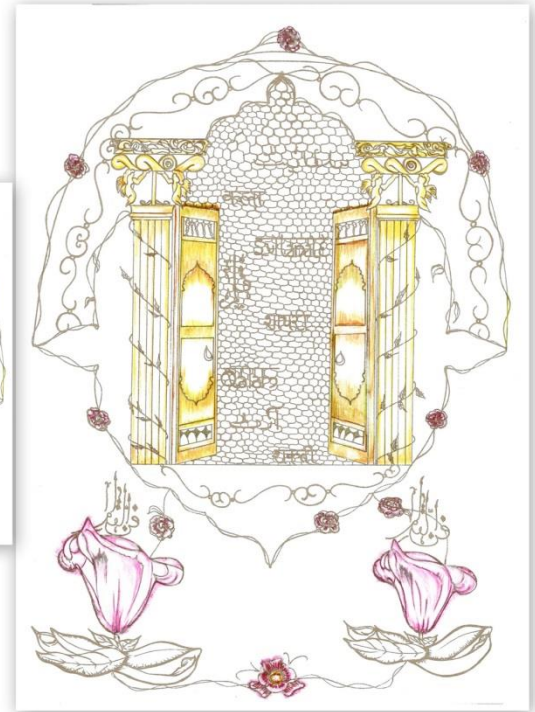
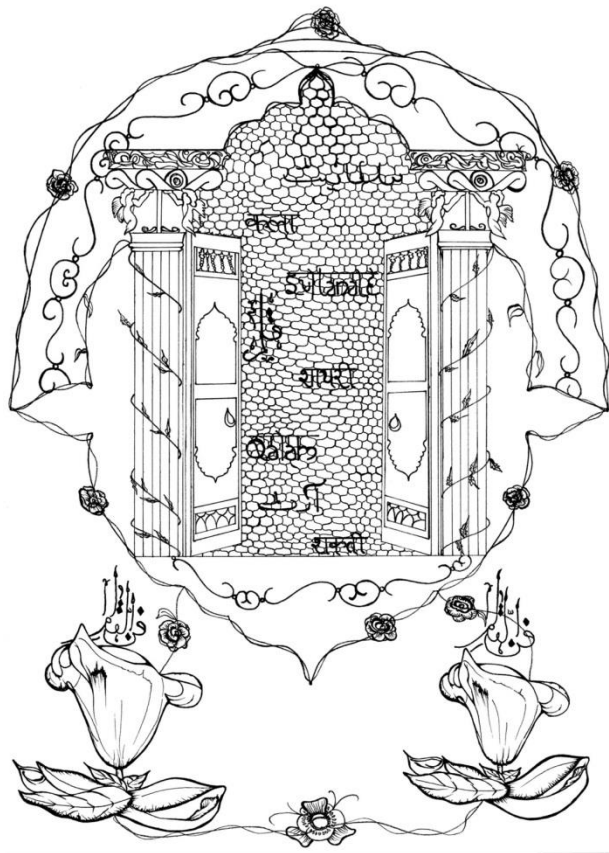
Inspired from the subculture I have named my colours such as- rusty reds (reddish- brown), dull mauve (greyish mauve + dark brown), purple rouge (pinkish- mauve), dusty pink (soft pink + muddy- brown), blossom sheen (golden- peach), dusty sunshine (rust greenish- yellow), scented stems- mix of soft floral colours with natural pastel shades of nature (pinkish- peach and earthy mauve- light mauve and peach) and traces of sparkle, inspired by the gleaming role of women throughout the ages (touch of silver lining and gold detail).

PRINT 1- CONCEPT 1



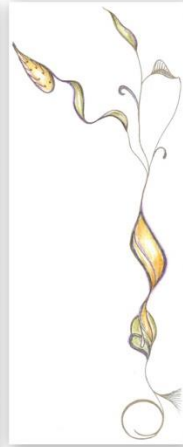
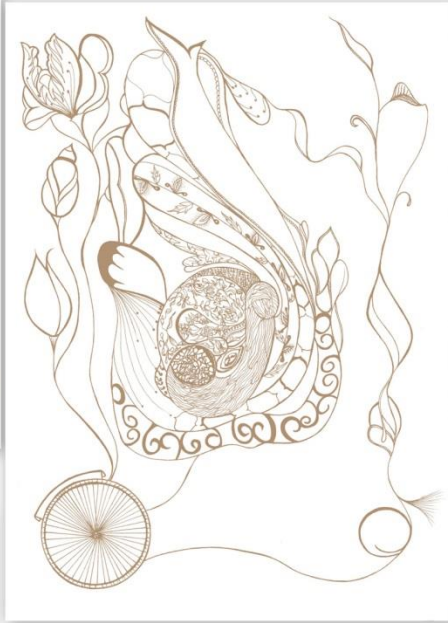
SOVEREIGNTY IN DISGUISE

PRINT 2- CONCEPT 2



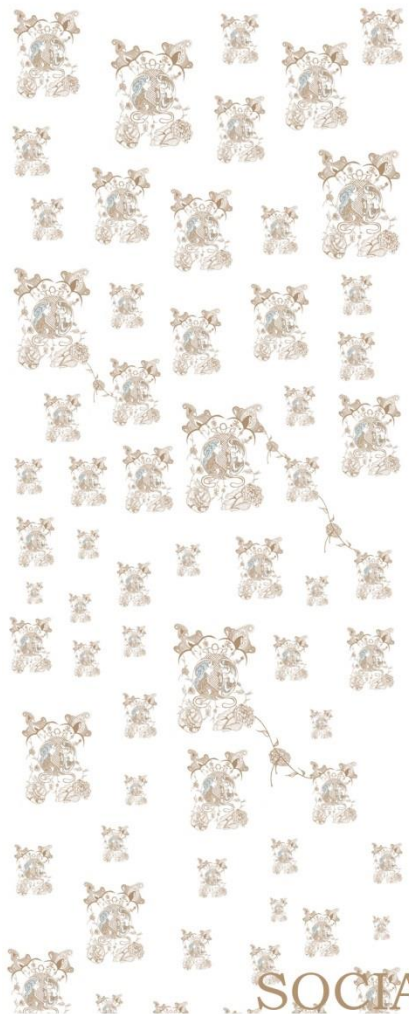
EMPERORS IN LEAGUE, VIRILITY IN THE SOCIAL DYNAMICS

PRINT 3- CONCEPT 3



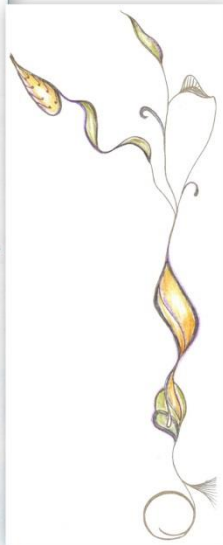
REVOLUTIONARY STYLES, THE IMPACT OF ART OPPOSE TO ARTILLERY

PRINT 4- CONCEPT 4



SOCIAL INFLUENCE ON WOMEN'S ATTITUDE AND STYLE

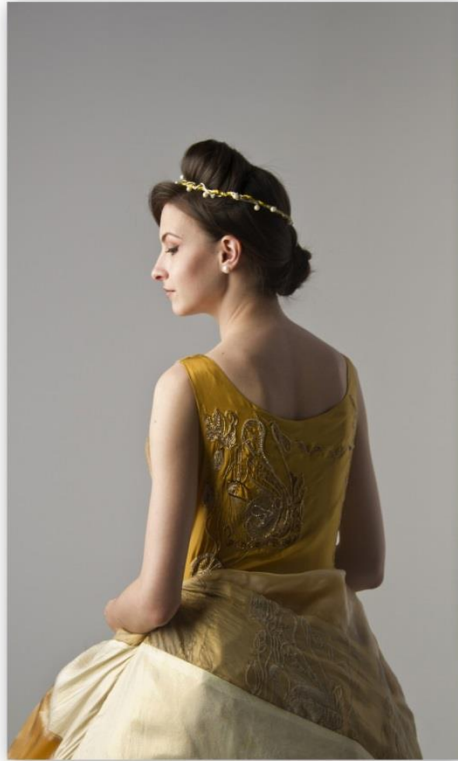
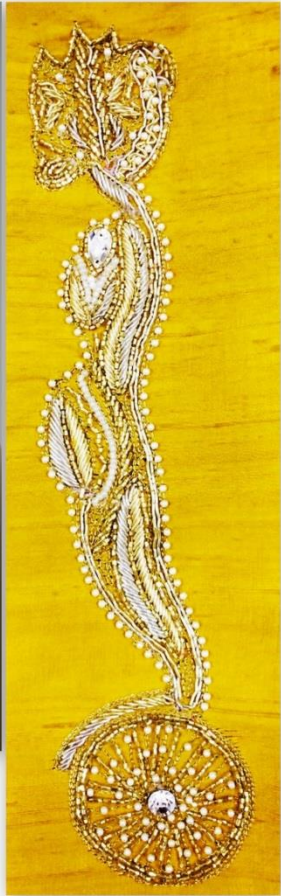
LOOK 1- CONCEPT 3



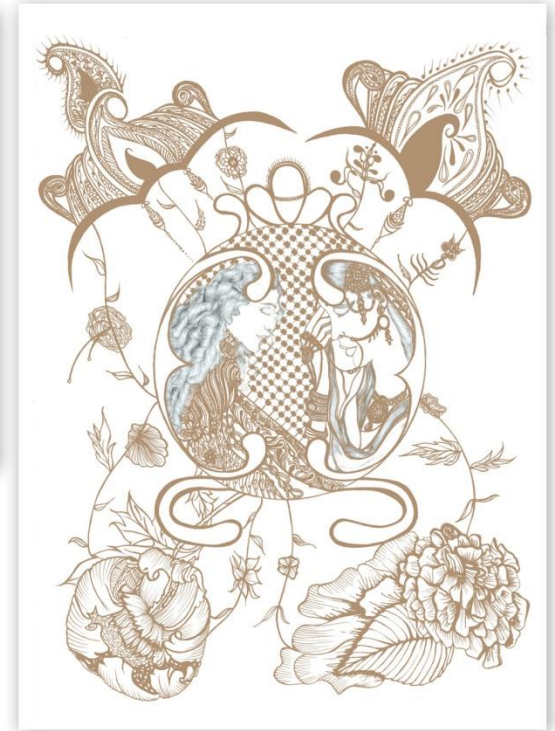
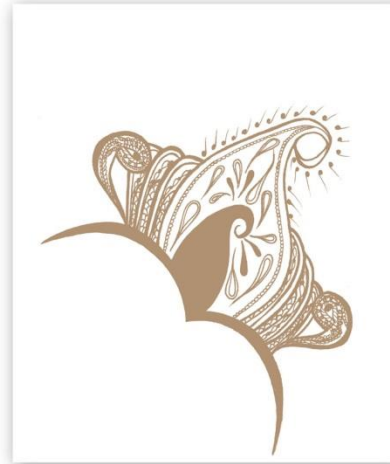
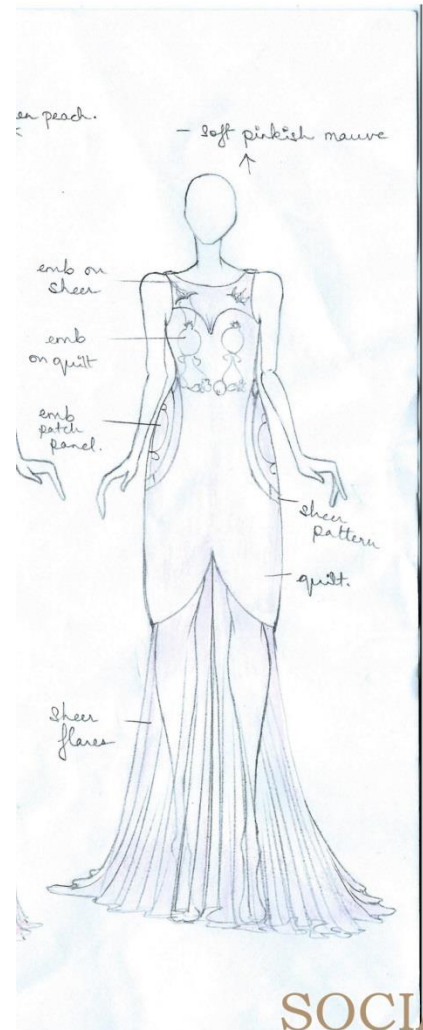
REVOLUTIONARY STYLES, THE IMPACT OF ART OPPOSE TO ARTILLERY

LOOK 1- CONCEPT 3





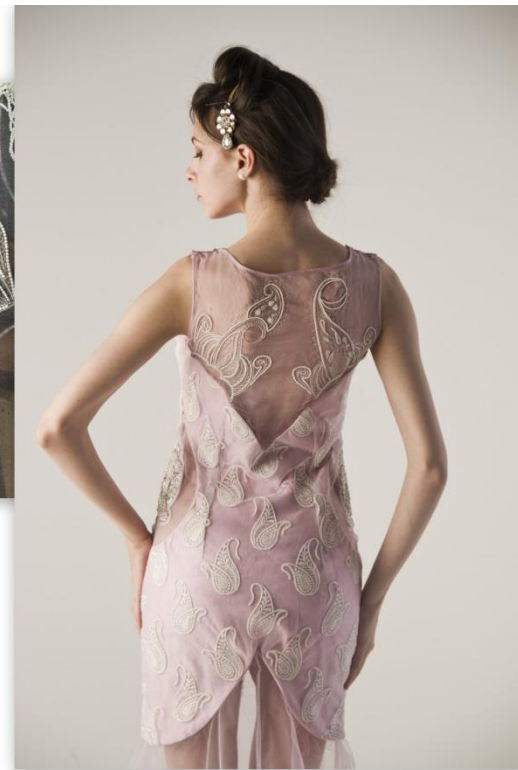
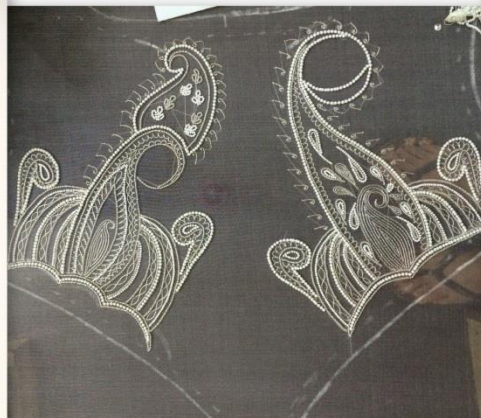
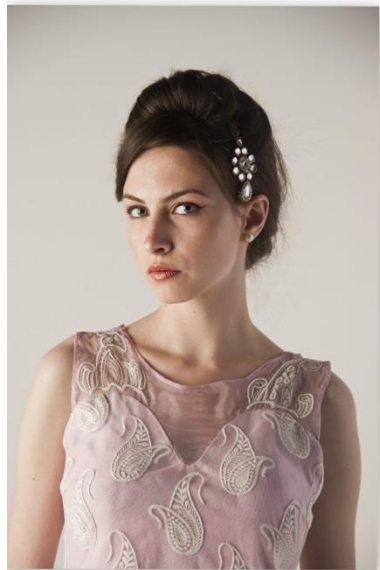
LOOK 2- CONCEPT 4



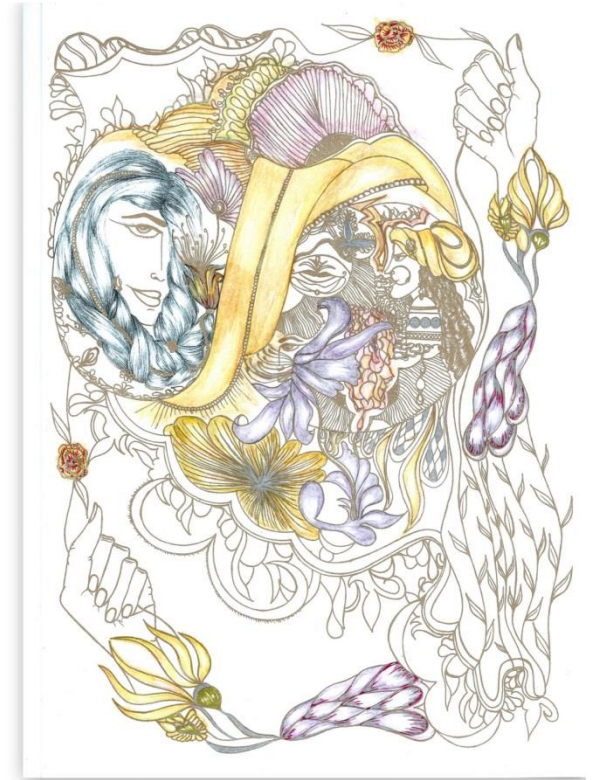
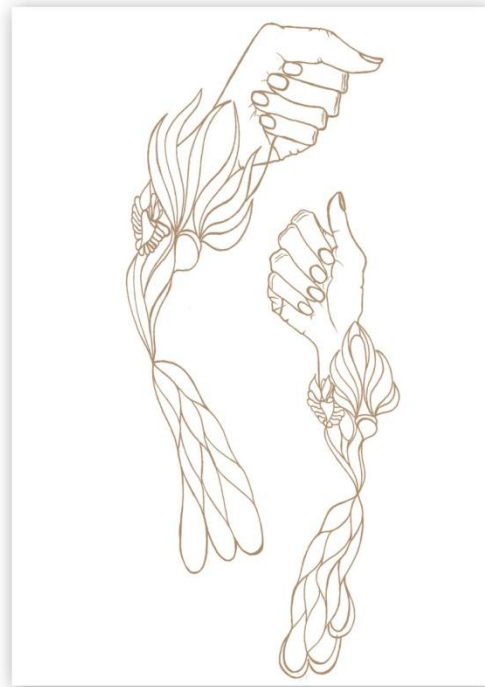
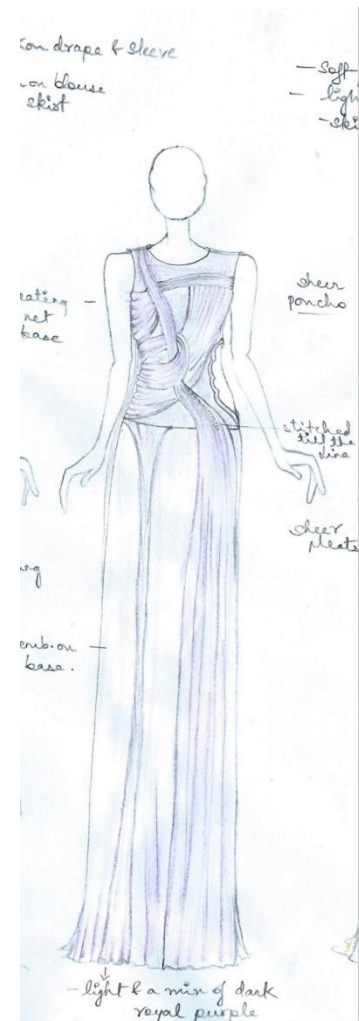
SOCIAL INFLUENCE ON WOMEN'S ATTITUDE AND STYLE

LOOK 2- CONCEPT 4





LOOK 3- CONCEPT 1



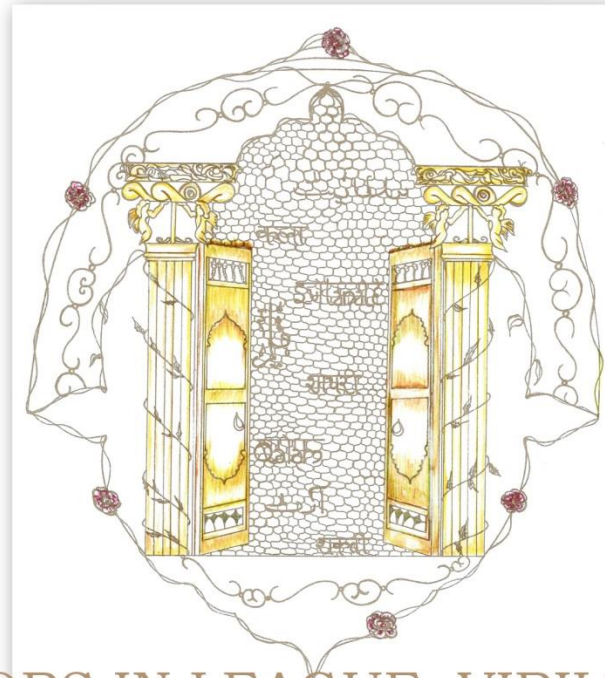
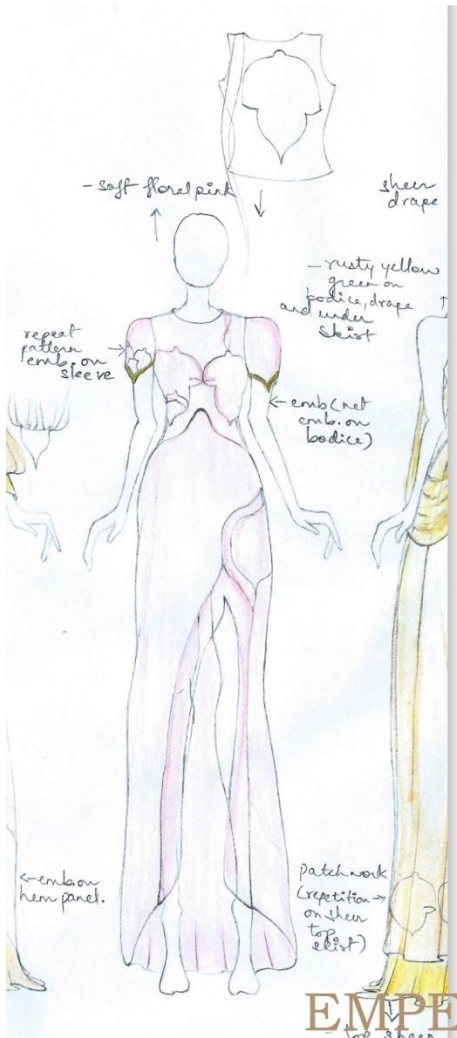
SOVEREIGNTY IN DISGUISE

LOOK 3- CONCEPT 1





LOOK 4- CONCEPT 2



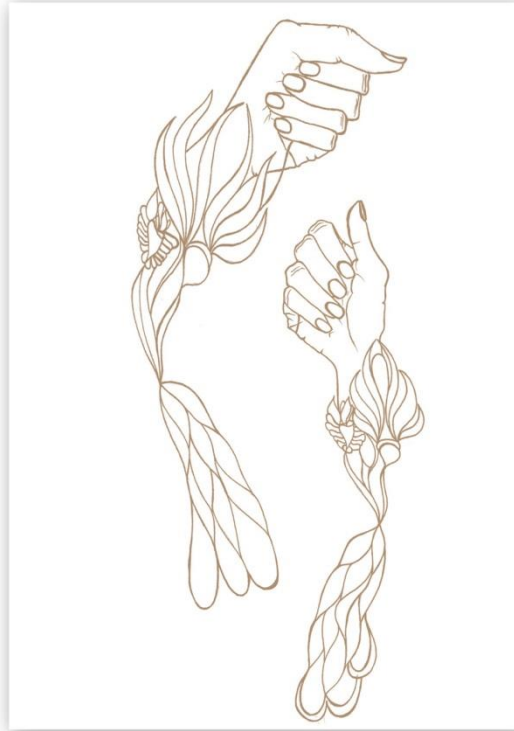
EMPERORS IN LEAGUE, VIRILITY IN SOCIAL DYNAMICS

LOOK 4- CONCEPT 2





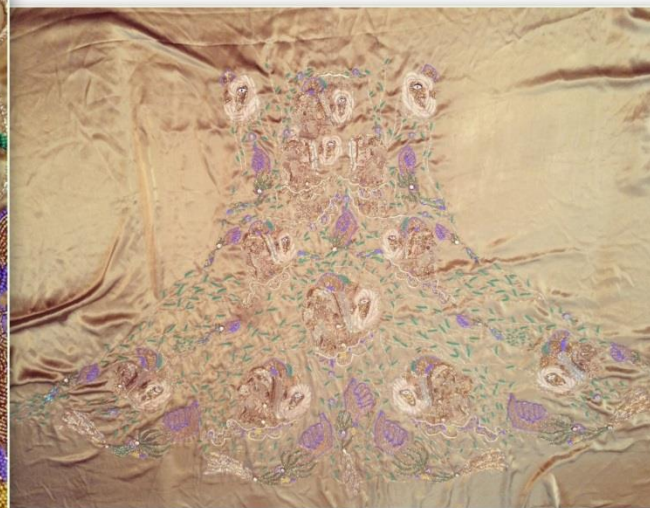
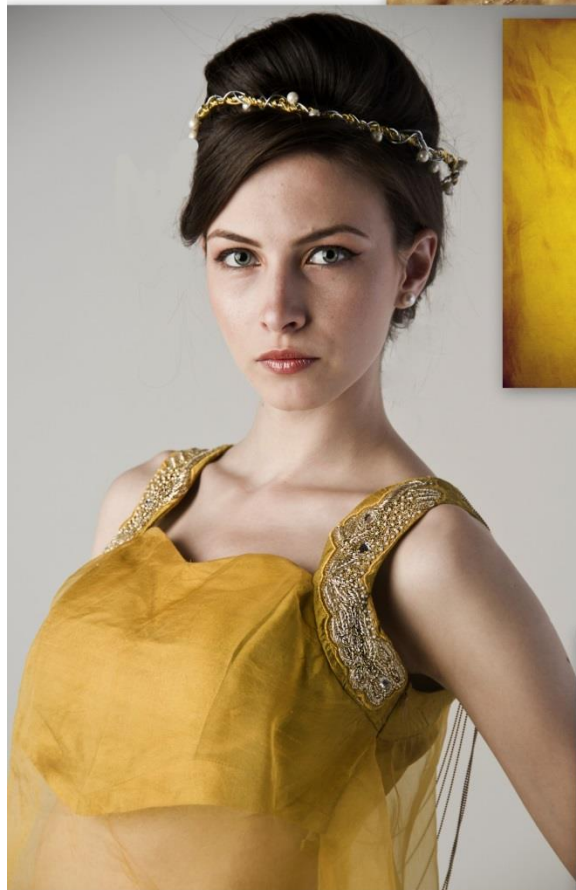
LOOK 5- CONCEPT 1



SOVEREIGNTY IN DISGUISE

LOOK 5- CONCEPT 1





LOOK 6- CONCEPT 4



SOCIAL INFLUENCE ON WOMEN'S ATTITUDE AND STYLE

LOOK 6- CONCEPT 4

